

Implementation of the Finnish social and health care reform at welfare county level

Juha Kinnunen, Professor
Director of Hospital Services
Pirkanmaa County

Tallin September 19th 2024



The Wellbeing Services
County of Pirkanmaa

County of Pirkanmaa

- Provides services for over 500 000 inhabitants in the Pirkanmaa area
- Provides also specialised services for the larger, collaborative area in Central Finland
- Includes the University Hospital (1/5 in Finland)
- Over 19 000 employees
- Budget 2,7 billion EUR in 2024
- The highest decision-making body is a county council with 79 council members
- County council was elected in direct and proportional county elections in 2022

The Wellbeing Services
County of Pirkanmaa

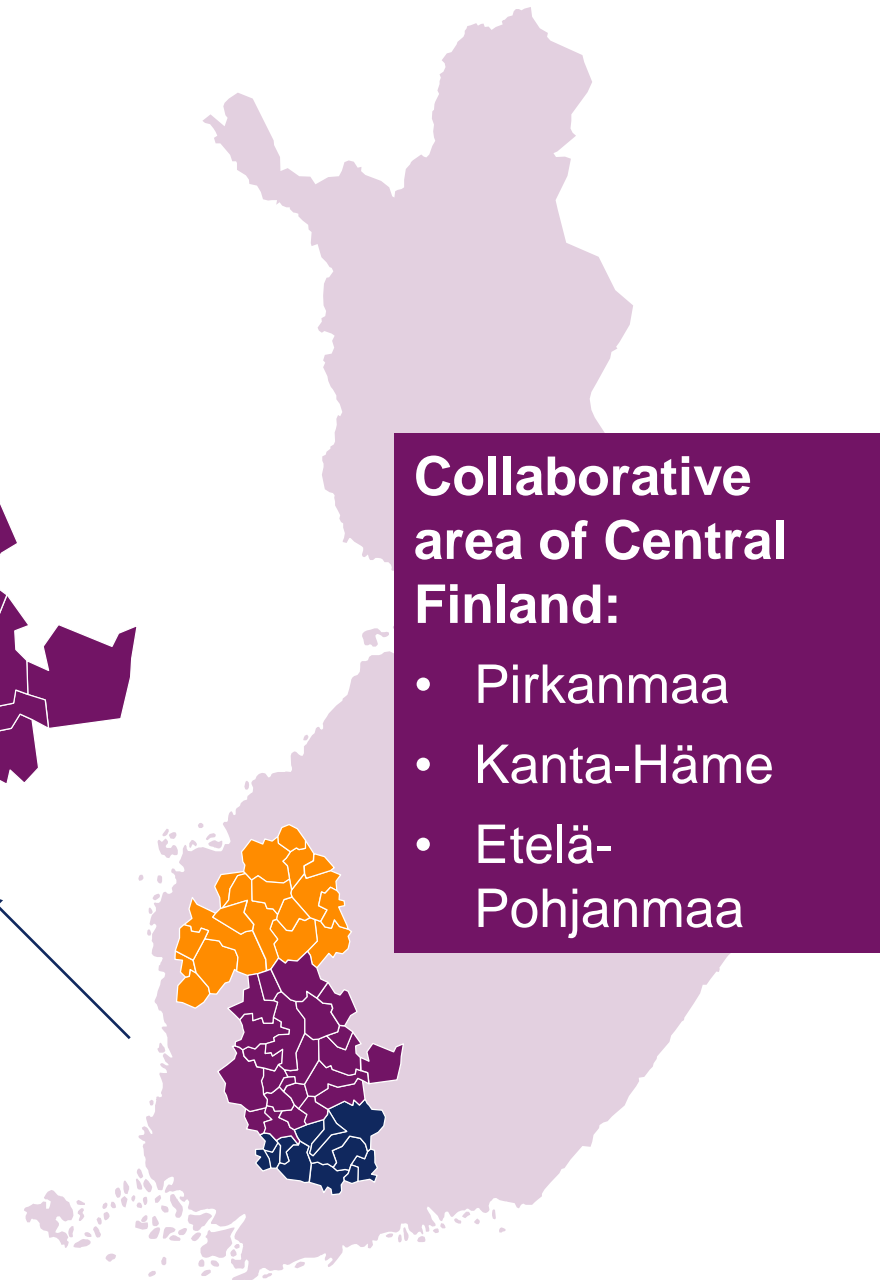
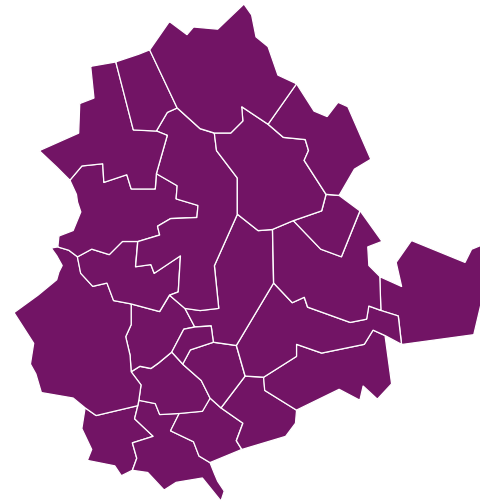


**Pirkanmaa is the
biggest
wellbeing
services county
in Finland**



Collaborative area of Central Finland

- Finland has 5 collaborative areas in total, with a university hospital in each one
- Aim is to promote the regional coordination and development of health care and social welfare, and cooperation between the wellbeing services counties
- A mutual cooperation agreement for each collaborative area required



Collaborative area of Central Finland:

- Pirkanmaa
- Kanta-Häme
- Etelä-Pohjanmaa



**The Wellbeing Services
County of Pirkanmaa**

Duties of wellbeing services counties

- Primary healthcare
- Specialised healthcare
- Social welfare
- Services for children, young people and families
- Services for working-age people
- Mental health and substance abuse services
- Services for persons with disabilities
- Student welfare
- Rescue services
- Prehospital emergency medical services





“One budget line, one political decision-making system, unified leadership”

Integration is the key


STRATEGY 2025

“We serve the residents of Pirkanmaa better by renewing our operations boldly and sustainably”

**Pirkanmaan
hyvinvointialue**



Focus on the Human




Equal, preventive
and effective
services



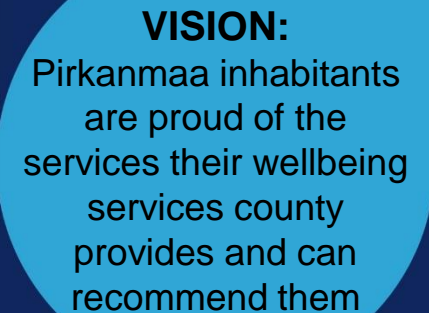
VALUES:
Humaneness
Respect
Courage
Sustainability
Trust



Prospering
employees



Collaborating
together in unity




VISION:
Pirkanmaa inhabitants
are proud of the
services their wellbeing
services county
provides and can
recommend them




Challenges

- Scattered service delivery system based on multiple municipalities in the area
- Funding
- Lack of personnel
- Ageing population
- Fragmented area

- ✓ Political commitment and decision-making ability
- ✓ Regional reform policy
- ✓ Uniform leadership structure and core transformation team
- ✓ Competence
- ✓ Ability to inspire and involve personnel

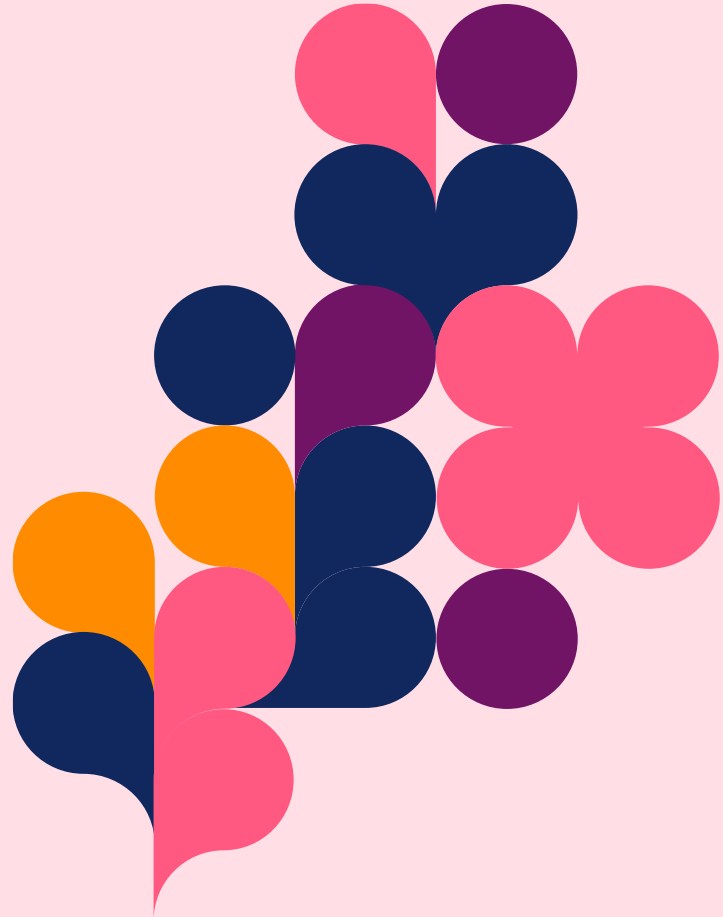


**The prerequisites
of ensuring the
successful
regional
implementation
of the reform:**



Major Achievements

- Safe transition
- Balancing service structure and strategy for the whole region
- Digitalization in primary and secondary care
- Equal criteria for elderly care
- Home hospitals and palliative care available in the whole region
- Resources transformed from specialized care to primary care, home hospitals and social services



The Finnish reform is world class reform - no other country has conducted such large health & social care and rescue services reform ever

